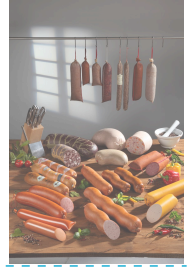


Textile



Products / Applications

Textile casings

- BETEX K: Coated textile casing for cooked and smoked products
- BETEX KB: Barrier coated textile casing for cooked products
- BETEX RS: Coated textile casing for dry sausages & salami
- TEXDACOL F: Textile casing with collagen for dry sausages & salami

Advantages

- Handmade and natural appeal for quality products
- Consistency in caliber and weight
- Differentiation and efficiency

Confection

- Natural casing shapes (cal. 36 up to 250 mm): Beef bungs, Fat ends, Middles, Hog Bladders, Chicken and turkey shapes
- Cuts, reels and shirred seamless casings (cal. 36 up to 250 mm)
- Printing (Flexographic 6+6 colors)

Colors

- Natural: Yellow, Cream, Mahogany, Veins, Chicken skin, Roasted chicken skin, Salmon, Mould
- Clear, white, cream, yellow, orange, brown, gold, red, green, blue, black

Storage

- Keep in original packaging. To be used before 1 year.